



 **Girlguiding**
Cymru



Girlguiding Cymru

Camp & Holiday Centre

October 2023



**Ynysgain Camp
and Holiday Centre**
Criccieth, LL52 0SA,
North Wales



girlguidingcymru.org.uk/ynysgain
waleshq@girlguidingcymru.org.uk

Ynysgain

Girlguiding Cymru Residential Centre Criccieth LL52 0SA Gwynedd, North Wales.



Ynysgain

Ynysgain is situated about a mile from Criccieth, half way between Criccieth and Llanystumdwy on the A497.

Ynysgain is on the edge of Snowdonia National Park and is surrounded by farmland most of which is owned by the National Trust. Its position is excellent for outdoor activities, including water sports, walking and climbing.

Ynysgain is about a five-minute walk to a beach abundant with shells and stones. The beach is home to many sea birds and seals inhabit the shallow coastal waters.

The three stone residential properties are built around a large courtyard. The four campsites are each in their own gated field, surrounded by hedges, stone walls and trees.

**Camp equipment is
available for hire
with any of the sites.**



Booking Information







Give us a call on 01686 688652 or email us at waleshq@girlguidingcymru.org.uk.
Visit us and discover Ynysgain for yourself.

Website

 girlguidingcymru.org.uk/ynysgain

On our website you will find

-  Further information
-  Photos
-  Booking forms
-  Friends of Ynysgain application form

To check availability

Girlguiding Cymru
The Coach House
Broneirion, Llandinam,
Powys SY17 5DE

 waleshq@girlguidingcymru.org.uk

 01686 688652

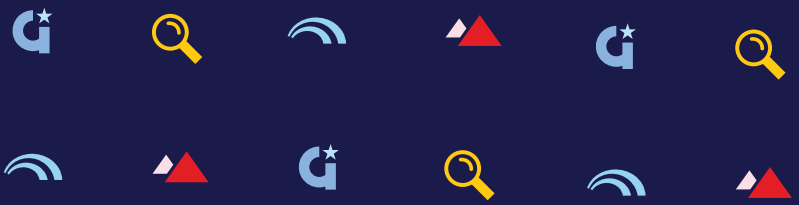
Where is Ynysgain?



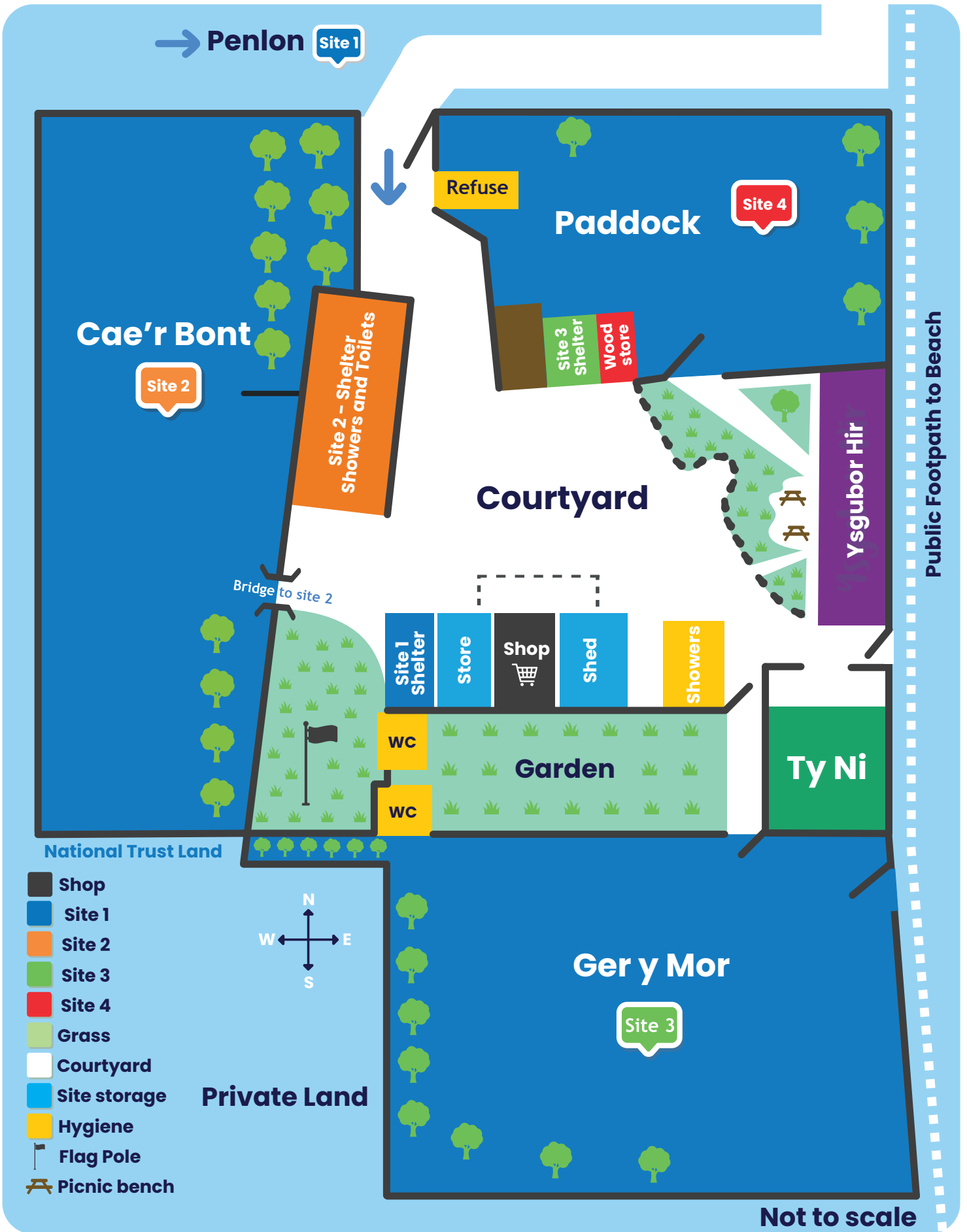
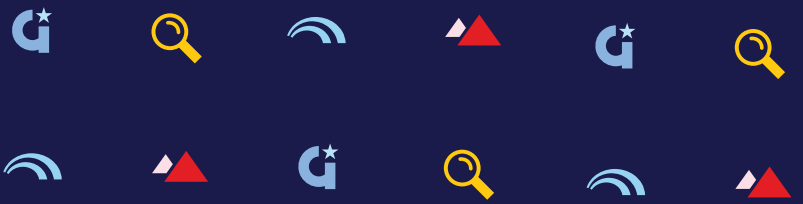
Flag pole & View to the sea

 **Girlguiding**
Cymru

Ynysgain site map



Ynysgain courtyard



Booking Information



Bookings - Initial enquires may be made by phone or email.
Email: waleshq@girlguidingcymru.org.uk
Tel. 01686 688652

**Download
Booking Forms**

All bookings should be made using a booking form,
Via Email to waleshq@girlguidingcymru.org.uk

Or by mail

Girlguiding Cymru
The Coach House
Broneirion
Llandinam, Powys
SY17 5DE



Important

We will confirm your booking via email. Please ensure you include your email address on the form.

At the time of booking visitors should also order



Bags of wood



Altar fireplaces



Fees - are detailed on the booking form and can be paid by cheque or Bank transfer.



Cancellations - Should it be necessary for you to cancel your booking the deposit will be retained.

Arrivals

Arrival - In the peak season all the sites and properties welcome members to arrive after 2.00pm

Departures

Departure - In the peak season all the sites and properties must be vacated by 1.00pm



Tidy! - When vacating Ynysgain, please leave all properties and camp sites clean and tidy - we do not have a cleaner! The site is run by Girlguiding volunteers. Please leave Ynysgain as you would wish to find it.

Pen Lôn

About Pen Lôn

Pen Lôn offers the chance for members to experience camping. We have ample space on the site. This site will accommodate 30 campers.



Toilet Block



Shelter



Site Entry



Aerial view

Pen Lôn



Accommodates

30

Site accommodates 30 Members

Water supply



Fresh tap water is available from a tap in the field.

Toilets



There are 3 flush toilets.

Wash Cubicles



3 wash cubicles (no taps in cubicles). These can be used for changing also.

Showers



Shower block in the courtyard.

Shelter



Site 1 has a small stone built solid shelter in the courtyard.

Fridge/Freezer



Site 1 has a small stone built solid shelter in the courtyard - where there is a fridge / freezer.

Tables and chairs



Site 1 has a small stone built solid shelter in the courtyard - where there are tables & chairs.

Charging points



Site 1 has a small stone built solid shelter in the courtyard - where there are electricity power points.

Cae'r Bont

About Cae'r Bont

Cae'r Bont offers the chance for members to experience camping. We have ample space on the site. This site will accommodate 60 campers



Toilet Block



Bridge



Camping



Aerial view

Cae'r Bont



Accommodates



Site accommodates 60 Members

Water supply



Water is available from tap outside Y Bwthyn.

Toilets



The site has 5 flush toilets which are next to the solid shelter.

Wash Cubicles



3 wash cubicles (no taps in cubicles). These can be used for changing also.

Showers



The site has 5 flush toilets and 3 showers, which are next to the solid shelter.

Shelter



Site 2 has a stone built solid shelter in the courtyard.

Fridge/Freezer



Site 2 has a stone built solid shelter in the courtyard where there is a fridge and freezer.

Tables and chairs



Site 2 has a stone built solid shelter in the courtyard with tables & chairs.

Charging points



Site 2 has a small stone built solid shelter in the courtyard - where there is a power point.

Ger y môr

About Ger y môr

Ger y môr offers the chance for members to experience camping. We have ample space on the site. This site will accommodate 50+ campers.



Shelter



Camping



Site view



Toilets

Ger y môr



Accommodates

50

Site accommodates 50 + Members

Water supply



Water is available from tap outside the shower block in the courtyard.

Toilets



New toilet block has 3 flush toilets and wash basins situated in garden adjoining the site plus an additional toilet.

Wash Cubicles



New toilet block has 3 flush toilets and wash basins situated in garden adjoining the site plus an additional toilet.

Showers



Shower block is in the courtyard.

Shelter



Site 3 has a solid shelter in the courtyard.

Fridge/Freezer



Site 3 has a small stone built solid shelter in the courtyard - where there is a fridge / freezer.

Tables and chairs



Site 3 has a small stone built solid shelter in the courtyard - where there are tables & chairs.

Charging points



Site 3 has a small stone built solid shelter in the courtyard - where there is a power point.

The Paddock

About The Paddock

The Paddock is a field off the courtyard and is used as an overflow site from the other campsites or properties. There is a covered shelter on this site.

Water supply



Fresh tap water is available from a tap in courtyard.

Toilets



There are no toilets specific to this site as it is an overflow site. Members to use the toilets for the main site they have booked.

Shelter



There is a covered shelter on this site.

Showers



Showers in courtyard.

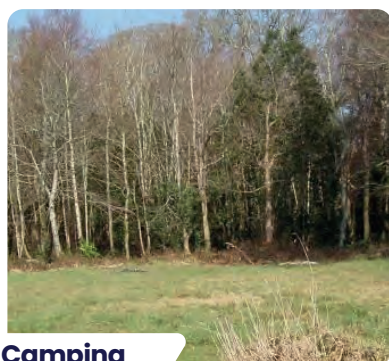
Wooded Area



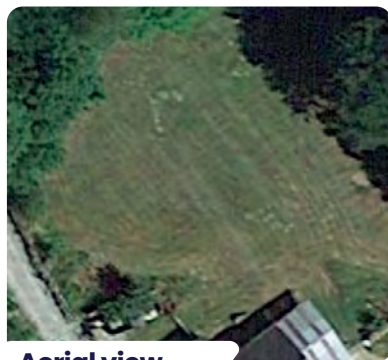
Wooded Area.



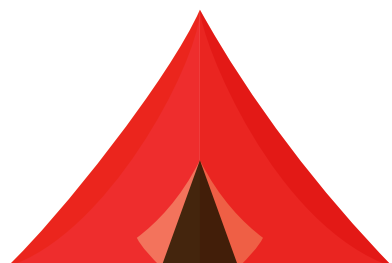
Courtyard



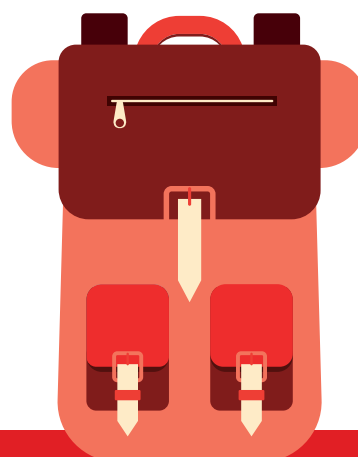
Camping



Aerial view



The Paddock



Ysgubor Hir

About Ysgubor Hir

This property is a converted stone barn (suitable for a wheel chair user) accommodating 14 people (eg 4 Adults, 10 girls).



The Barn



Side View



Kitchen Diner

Kitchen Area



Fitted kitchen with units, double sink, work surfaces. 2 Electric cookers and hob, fridge, freezer, microwave, kettles, toasters, pans and cooking utensils, crockery, glasses and cutlery. Immersion heater.

Sitting Room / Bedroom



4 single beds, 3 easy chairs, 1 x chest of drawers and chairs. Night storage heater and 1 Rointe digital electric radiator.



Dining Area



3 tables, chairs. 1 Rointe digital electric radiator.

Bathroom



2 electric showers, 2 toilets and 3 wash hand basins. Plus a further cubicle with toilet and wash hand basin is suitable for a disabled user. 1 Rointe digital electric radiator.

Bedroom



Bedroom sleeps 10 in five bunk beds, 2 x chest of drawers, chairs. Night storage heater.



Ysgubor Hir



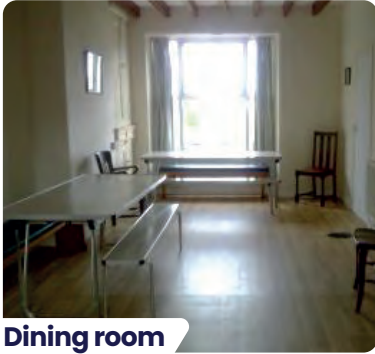
Accessible for all



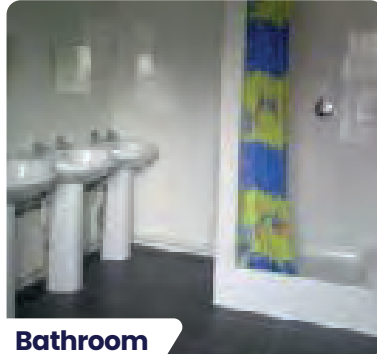
Ty Ni

About Ty Ni

A well-equipped farmhouse for 16 people (eg 4 Adults, 12 Girls)



Dining room



Bathroom

This property is fitted with double glazed windows and doors. It has oil fired central heating fitted with radiators in all rooms.



Sitting room



Kitchen

Ty Ni



Kitchen



Kitchen - kitchen units with stainless steel sink, hand washing sink, cookers, fridge, microwave, kettles, toasters, pans and other cooking utensils, crockery, glasses and cutlery.

Under stairs



Large under stairs storage - housing a chest freezer, vacuum cleaner, brooms and cleaning equipment.

Sitting room



Sitting Room - carpeted, with easy chairs, coffee table and foot stools.

Dining room



3 large Go Pack tables, with bench seating and other dining chairs.

Bathroom



Bathroom - tiled with 2 separate toilets, 3 shower cubicles and 3 washbasins. Cupboard off bathroom enclosing water and heating controls. Separate toilet off landing.

Hallway



With staircase, leading to landing.

Bedroom 1



Bedroom 1 - sea views, sleeps 6 in three bunk beds, with 1 chest of drawers and chairs.



Bedroom 2



Bedroom 2 - sea views, sleeps 6 in three bunk beds, with 1 chest of drawers and chairs



Bedroom 3



Bedroom 3 - overlooking the courtyard, sleeps 4 in two bunk beds, with 1 chest of drawers, washbasin and chairs.



Directions & site info



Directions

By Road On the A497 from Criccieth to Pwllheli, after passing the Bron Eifon Hotel on the right, the entrance to Ynysgain Bach is the next narrow turning left (Ynysgain Lodge is at the entrance with a footpath sign). Follow the left hand fork, straight down the gravel lane to the courtyard. The Criccieth to Pwllheli road can be busy in the peak season.

Postcode

LL52 0SA

what3words.com
Entrance to site

Grid ref

SH 484 383

What3
words

Park/Sisters/
Slouched

Access

A wheelbarrow is available to transport camp equipment. The drive is unsuitable for large coaches.

By rail

The nearest station is Criccieth, about a mile from the site. There is a good footpath running parallel to the main road. It is also possible to walk along the beach or cliff path.

Boundaries

Ynysgain Bach adjoins the private grounds of Ynysgain Plas (Ynysgain House). The map defines the boundaries of the Guide property to be used by campers and visitors.

Dogs

No dogs allowed. Please ensure all visitors are aware of this rule.



Information for campers



What you need to know

We have campsites suitable for everyone – from experienced outdoor lovers to first time campers. Whatever your needs, we have a site to suit you. Here is some information that will help you plan your visit.

Altar fires

Altar Fires are available. They are stored in the woodshed and should be returned after use, cleaned and cold.

Camp fires

Camp Fires may be held on the concrete campfire area on each site. All camp fires bases to be cleared after use.

Wood bags

Wood Bags of logs should be ordered when booking the site.

Wooding

Leaders should bring their own axe and saw. Trees should not be cut down and wood must not be gathered from neighbouring property.

Flag pole

This is the fire assembly point.



Housekeeping information



Tidy

When vacating Ynysgain, please leave all properties and camp sites clean and tidy – we do not have a cleaner! The site is run by Girlguiding volunteers. Please leave Ynysgain as you would wish to find it.

Breakages and damage

All breakages and damages must be reported.

Electricity

Groups using excessive electric will be charged extra – ie: using fan heaters to dry tents in the shelter.

Fridge/Freezer

Please ensure any food is removed from the Fridge/Freezer before your group leaves.



Site utilities



Fire equipment

All properties have the necessary fire alarms and extinguishers which are regularly serviced. Fire doors should not be propped open.

Ynysgain shop

During your stay you will be able to visit the “shop” to purchase Ynysgain souvenirs, Ynysgain badges and reasonably priced gifts. Please ask about visiting during your stay. All money raised help with the improvements of properties and campsites at Ynysgain

Rubbish

All rubbish must be put in plastic sacks which are not provided. One wheelie bin is for recyclable materials (plastic, tin, paper, cardboard). One wheelie bin is for refuse/food waste. Located in the compound by the Paddock.

Site address

GIRLGUIDING CYMRU CAMP SITE, Site 1, (or 2, or 3, or Paddock, Ty Ni, Y Bwthyn, or Ysgubor Hir), Ynysgain Bach, Criccieth, Gwynedd. LL52 0SA

Telephone

- In Llanystumdwy village (one mile)
- By the post office in Criccieth.

Site address

No dogs allowed. Please ensure all visitors are aware of this rule.

Mobile Signal Checker



	Voice	3G	4G	5G
Three	✓	✓	✓	✗
O2	✓	✓	✓	✗
EE	✓	✓	✓	✗
Vodaphone	✓	✓	✓	✗
Tesco Mobile	Outdoor Only	✗	✓	✗



Local information



Doctors

Criccieth Health Centre, High Street, Criccieth, Gwynedd.
Phone number 01766 800550 Out of Hours 111



Local casualty Hospitals

Bryn Beryl Hospital Minor Injuries
Unit Pwllheli (6 miles from site)
Tel. 01758 704325 (not 24 hours)

Ysbyty Alltwen, Tremadog,
Porthmadog.
Tel. 0300 0852 406 (8am to 8pm)



A&E

Ysbyty Gwynedd, Bangor.
(30 miles from site)
Tel. 01248 384384



Pharmacy

Fferyllfa E R Hughes Pharmacy
32 High Street, Criccieth, LL52 0BT.
Tel: 01766 522198



Calor Gas

Cylinders are available at
Parciau Garage Criccieth.
Tel: 01766 522431



Cash Point

Outside Nisa Local,
54 High Street, Criccieth



Places of Worship

Church in Wales (C. of E.)
Llanstumdwyl Parish Church
St. Catherine's, Criccieth Tel.
01766 523222

Presbyterian (English services)
Capel y Traeth, Mona Terrace,
Criccieth

Roman Catholic
Caernarfon Road, Criccieth
& in Porthmadog

Orthodox
Eastern orthodox church
Blaenau Ffestiniog.

Islamic
Bangor Islamic Centre
57 High St, Bangor LL57 1NR

Buddhist
The Hermitage - Buddhist
Centre, Ynys, Criccieth
LL52 0NT

Local shops and outlets



Bakers

Idris Café, 60 High Street,
Criccieth.
Tel. 01766 522119 (will deliver)



Butcher

Taylor's, 64 High Street,
Criccieth.
Tel: 01766 523112



Shops/Grocers

Siop Newydd, Criccieth.
Tel. 01766 522737

Spar, High Street,
Criccieth,
(Late night opening)
Tel. 01766 522410



Fish / Greengrocer

D.J. Jones, Central Building,
Criccieth. Tel. 01766 522308



Online Delivery

The following supermarkets allow
delivery to Ynysgain
(Booking slot dependant)

ASDA **Tesco**



Supermarkets

Lidl, Aldi & Tesco in
Porthmadog
Asda, Iceland, Co-op in
Pwllheli



Post Office

Criccieth is the nearest
main post office, about a
mile along the main road,
but there is a post box near
the entrance to the Bron
Eifion Hotel, about 10
minutes walk from the site.



Outdoor Stores

Millets - Porthmadog
(Member Discount)

Go Outdoor
Superstore, Bangor

Trespas Pwllheli



Out and about



Beaches

Ynysgain Beach - This is the nearest beach and when the tide is out, large rocks are exposed forming excellent rock pools. There are lots of shells, stones and a little sand.

Criccieth Beaches - 15 minutes, choice of two.

Black Rock Beach - Morfa Bychan



Tourist Information

Tourist Information,
Criccieth Post Office

contact@criccieth.co.uk



Ropeworks Hafan y Mor, Chwillog, Pwllheli, LL53 6HJ.

A fun challenge and adventure, with trained professional instructors on engineer-designed structures - climbing wall, high course, leap of faith, G3 swing and zip descent. (7.5 Miles)

01766 819187 www.ropeworksactive.co.uk



Criccieth is truly a castle to capture the imagination. Crowning its own rocky headland between two beaches it commands astonishing views over the town and across the wide sweep of Cardigan Bay. (1.5 Miles) www.cadw.gov.wales



Zip World has three activity centres in North Wales

Zip World Fforest - A470, Betws-y-Coed, LL24 0HX, (29 Miles)

Zip World Penrhyn Quarry - Bethesda, LL57 4YG 9 (30 Miles)

Zip World Llechwedd - Blaenau Ffestiniog, LL41 3NB (19 Miles)

www.zipworld.co.uk

Local transport



Local Coach Companies

Berwyn Coaches, Trefor, Caernarfon

 01286 660315

Clynnog & Trefor Motor Co.Ltd., Trefor, Caernarfon, Gwynedd.

 01286 660208

Caelloi Motors, West End Garage, Pwllheli.

 01758 612719



Taxi Service

Criccieth  01766 522726



Bus Service

Buses run during the summer season to Pwllheli and Criccieth. (Service No. 3)



Rail Service

Criccieth railway station serves the seaside town of Criccieth on the Llŷn Peninsula in Gwynedd, Wales. There are passenger services to Pwllheli, Porthmadog, Harlech, Barmouth, Tywyn, Machynlleth and Shrewsbury. Trains call every two hours each way (on request) on weekdays, with 3 trains each way on summer Sundays and a single one each way in the winter months



Air Travel

Caernarfon Airport is located in the heart of Snowdonia, with onsite facilities that include Pleasure Flights, Trial Lessons, Flight Training, Aerial Photography, Aviation Museum, Cafe/Bistro, Aviation Maintenance, and also home to the Wales Air Ambulance.



Ynysgain history



The township of Ynysgain was in existence by 1532, and the estate of Ynysgain Fawr by 1614.

Ynysgain was used as a campsite for many years by guiding members from around the UK.

Lichfield Guides camped at Ynysgain in 1979



Opening of Ysgubor Hir, the long barn

This facility provided accessible accommodation for guiding members at Ynysgain. It was opened by Editha Mitchell MBE, former Deputy General Secretary at CHQ.

Gifts from the Girl Guide Friendship Fund helped with this project. In the photo are Mayor Wyn Lloyd-Roberts, Mrs P. Lloyd-Roberts, Mrs Editha Mitchell CHQ, Mrs June Griffiths, CC Gwynedd, Miss Ann Hughes OAA-Wales.



1982